

Norfolk Healthy Child Programme

7th June 2016

Jenny Myhill, Head of Locality, North and Broadland

Helen Smith, Head of Locality, Breckland



-
- Healthy Child Programme re-procured in 2015
 - Cambridgeshire Community Services were successful in winning the tender for the delivery of new HCP specification across the whole of Norfolk
 - HCP services transferred to CCS include Health Visiting, School Nursing, National Child Weight Measurement Programmes, Hearing and Vision Screening, and Healthy Schools Service
 - January 2016 programme of service redesign commenced

Norfolk Healthy Child Programme ~ Aims

1. Protect and promote the health and wellbeing of all children, young people and their families - with the greatest improvements seen for those in greatest need so that health inequalities are reduced.
2. Achieve positive outcomes for the Service User through an integrated programme that is delivered by coordinated partnership working.
3. Be simple to access, with a clear range of pathways and choices.
4. Be liked, valued and trusted by its users, partners and staff.

Improving outcomes for children, young people and their families in Norfolk ~ by improving the services we provide

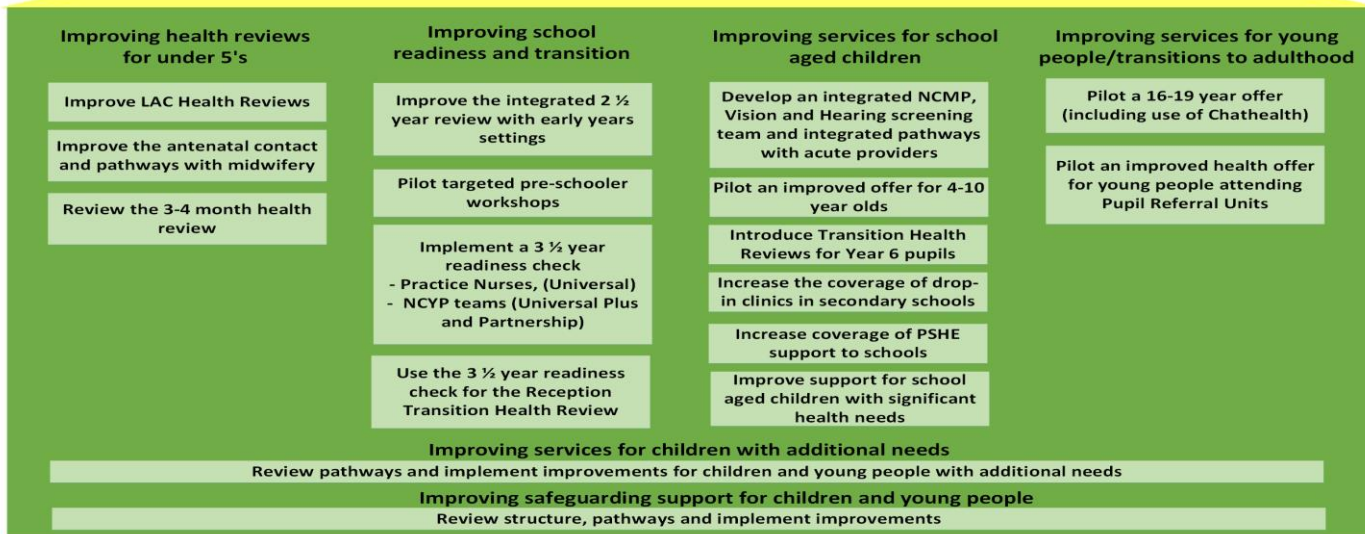
- Improving health reviews for under 5's
- Improving school readiness and transition
- Improving services for school age children
- Improving services for young people / transition to adulthood
- Improving services for children with additional health needs
- Improving safeguarding support for children and young people

Improving access and care coordination ~ by making sure we have strong foundations

- Locality teams
- Integrated 0-19 service
- Increased skill mix
- Single Point of Access
- Co-Production with service users
- Partnership working, including alignment to Early Help Hubs

Improving Outcomes for children, young people and their families in Norfolk

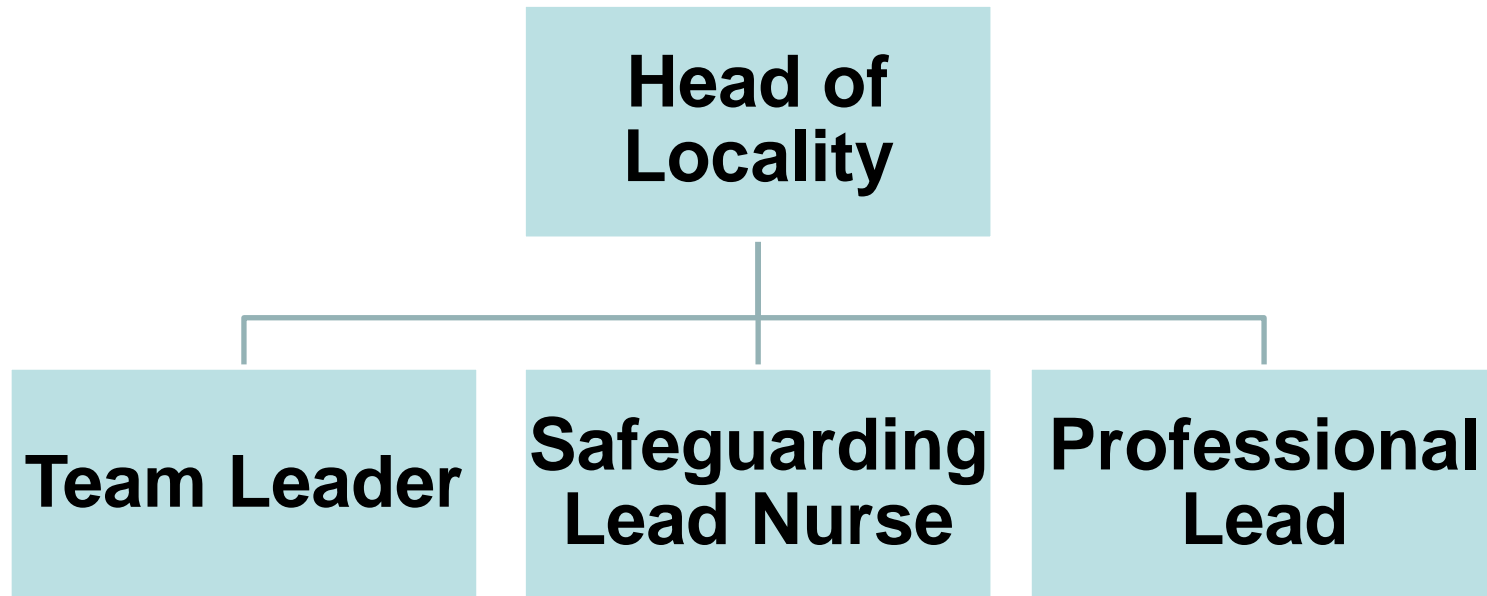
Improving the Services we provide



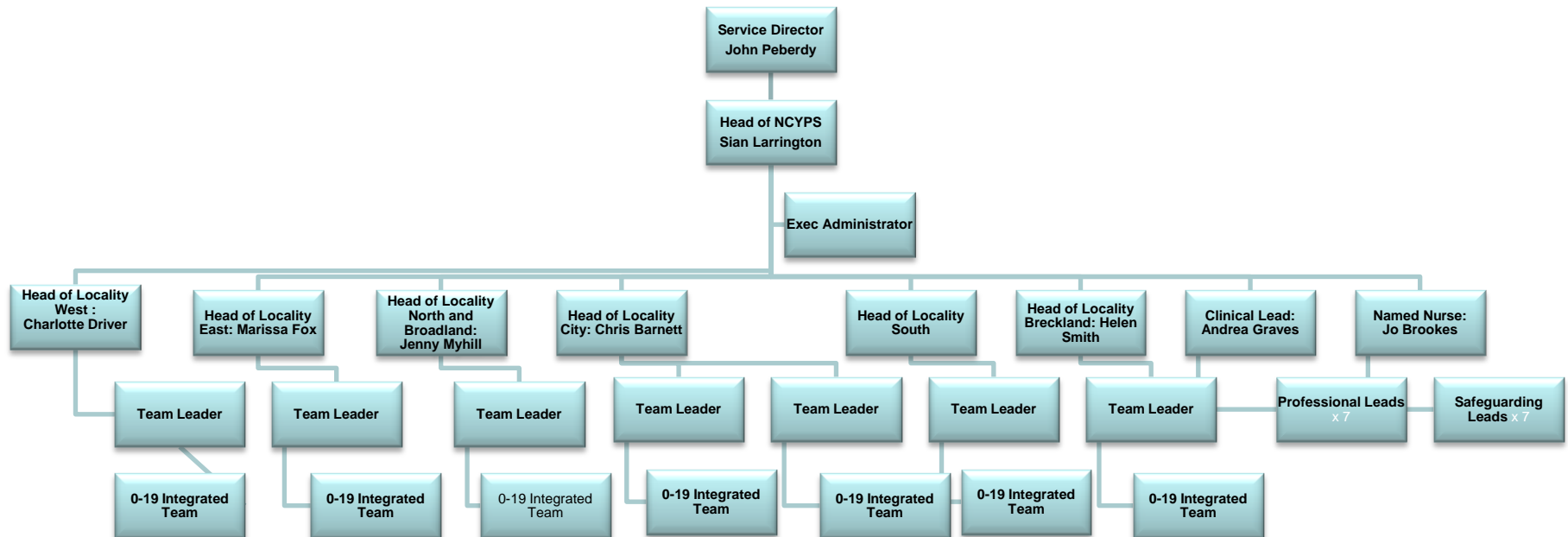
Making sure our foundations are strong



Locality Leadership Structure



Norfolk Children and Young Peoples Service Countywide Structure



Additional countywide roles

- Early Years Psychologist
- Specialist Mental Health Practitioner
- Healthy Lifestyles Lead Practitioner; NCMP, Hearing and Vision screening, infant feeding and behaviour change
- Additional Needs and Disability Practitioner
- Traveller and Migrant Specialist Practitioner
- Safeguarding Lead Nurses; neglect, CSE, drugs and alcohol, domestic abuse